

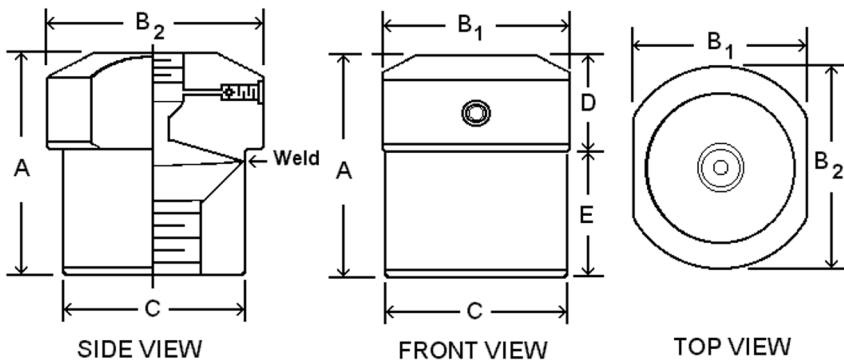
M3500 SERIES MINI DIAPHRAGM SEAL



Threaded mini diaphragm seal for dial sizes up to 3 1/2"
Compact, durable all-welded construction

SPECIFICATIONS

Design	Diaphragm, upper and lower housing welded
Instruments	Gauges, pressure transducers, transmitters
Appropriate Dial Size	1 1/2" (38 mm) through 3 1/2" (88.9 mm)
Pressures	60 psi through 2500 psi
Upper Housing	Standard: 316 stainless steel Optional: Monel®, Hastelloy® C276, Tantalum
Diaphragm	Standard: 316 stainless steel Optional: Monel®, Hastelloy® C276, Tantalum
Lower Housing	Standard: 316 stainless steel Optional: Monel®, Hastelloy® C276, Tantalum
Process Connection	1/4" FNPT, 1/2" FNPT, 3/4" FNPT
Instrument Connection	1/4" FNPT, 1/2" FNPT
Process Temperature¹	-49°F to 400°F (-45°C to 204°C)

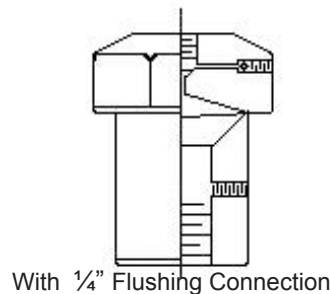


AVAILABLE OPTIONS*

- Flushing (1/4") connection available on lower housing
- Male threaded process connection
- Oxygen cleaned
- Material analysis certificate
- Custom upper/lower/diaphragm materials

Diaphragm Seal	Unit	A	B1	B2	C	D	E
Standard	In.	1.50"	1.60"	1.73"	1.49"	0.67"	0.81"
	mm	38	41	44	38	17	21
With Flushing Connection	In.	1.91"	1.60"	1.73"	1.49"	0.63"	1.35"
	mm	49	41	44	38	16	34

*Lead times/minimums may apply



Notes:

1. Process Temperature Rating can vary based on materials of construction, system fill fluid and pressure gauge selection.

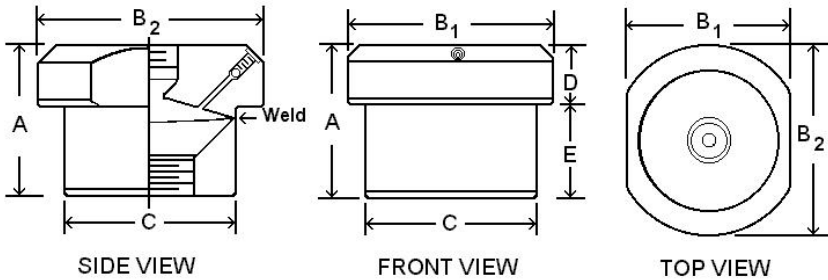


M4500 SERIES MINI DIAPHRAGM SEAL

Threaded mini diaphragm seal for dial sizes up to 4 1/2"
Compact, durable all-welded construction

SPECIFICATIONS

Design	Diaphragm, upper and lower housing welded
Instruments	Gauges, pressure transducers, transmitters
Appropriate Dial Size	Sizes through 4 1/2" (114 mm)
Pressures	30 psi through 2500 psi
Upper Housing	Standard: 316 stainless steel Optional: Monel®, Hastelloy® C276, Tantalum
Diaphragm	Standard: 316 stainless steel Optional: Monel®, Hastelloy® C276, Tantalum
Lower Housing	Standard: 316 stainless steel Optional: Monel®, Hastelloy® C276, Tantalum
Process Connection	1/4" FNPT, 1/2" FNPT, 3/4" FNPT, 1" FNPT
Instrument Connection	1/4" FNPT, 1/2" FNPT
Process Temperature¹	-49°F to 750°F (-45°C to 399°C)



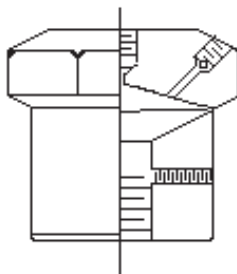
AVAILABLE OPTIONS*

- Flushing (1/4") connection available on lower housing
- Male threaded process connection
- Oxygen cleaned
- Material analysis certificate
- Custom upper/lower/diaphragm materials

Diaphragm Seal	Unit	A	B1	B2	C	D	E
Standard	In.	1.48"	2.35"	2.48"	1.91"	0.65"	0.83"
	mm	38	60	63	49	17	21
With Flushing Connection	In.	1.94"	2.28"	2.48"	1.91"	0.63"	1.31"
	mm	49	58	63	49	16	33

*Lead times/minimums may apply

8



With 1/4" Flushing Connection

Notes:

1. Process Temperature Rating can vary based on materials of construction, system fill fluid and pressure gauge selection.

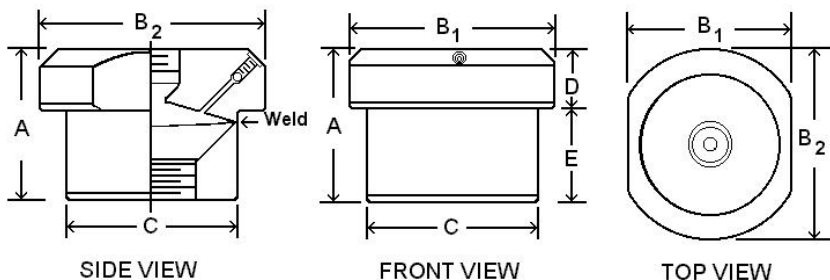
MHP MINI HIGH PRESSURE DIAPHRAGM SEAL



Threaded mini diaphragm seal for high pressure applications
Compact, durable all-welded construction

SPECIFICATIONS

Design	Diaphragm, upper and lower housing welded
Instruments	Gauges, pressure transducers, transmitters
Appropriate Dial Size	1 1/2" (38 mm) through 6" (152.4 mm)
Pressures	1000 psi through 6000 psi
Upper Housing	Standard: 316 stainless steel Optional: Monel®, Hastelloy® C276, Tantalum
Diaphragm	Standard: 316 stainless steel Optional: Monel®, Hastelloy® C276, Tantalum
Lower Housing	Standard: 316 stainless steel Optional: Monel®, Hastelloy® C276, Tantalum
Process Connection	1/4" FNPT, 1/2" FNPT, 3/4" FNPT, 1" FNPT
Instrument Connection	1/4" FNPT, 1/2" FNPT
Process Temperature¹	-49°F to 400°F (-45°C to 204°C)

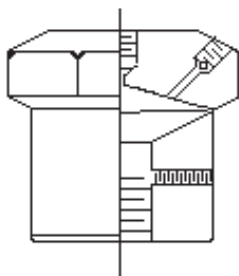


AVAILABLE OPTIONS*

- Flushing (1/4") connection available on lower housing
- Male threaded process connection
- Oxygen cleaned
- Material analysis certificate
- Custom upper/lower/diaphragm materials

Diaphragm Seal	Unit	A	B1	B2	C	D	E
Standard	In.	1.60"	1.90"	1.99"	1.62"	0.75"	0.85"
	mm	41	48	51	41	19	22
With Flushing Connection	In.	2.04"	1.90"	1.99"	1.63"	0.75"	0.85"
	mm	52	48	51	41	19	22

*Lead times/minimums may apply



With 1/4" Flushing Connection

Notes:

1. Process Temperature Rating can vary based on materials of construction, system fill fluid and pressure gauge selection.



MLP MINI LOW PRESSURE DIAPHRAGM SEAL

Threaded mini diaphragm seal for low pressure applications
Compact, durable all-welded construction

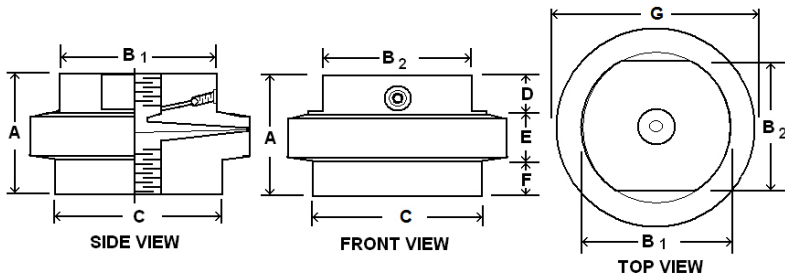
SPECIFICATIONS

Design	Diaphragm, upper and lower housing welded
Instruments	Gauges, pressure transducers, transmitters
Appropriate Dial Size	1 1/2" (38 mm) through 4 1/2" (114.3 mm)
Pressures	Vacuum or pressures up to 2500 psi
Upper Housing	Standard: 316 stainless steel Optional: Monel®, Hastelloy® C276, Tantalum
Diaphragm	Standard: 316 stainless steel Optional: Monel®, Hastelloy® C276, Tantalum
Lower Housing	Standard: 316 stainless steel Optional: Monel®, Hastelloy® C276, Tantalum
Process Connection	1/4" FNPT, 1/2" FNPT, 3/4" FNPT, 1" FNPT
Instrument Connection	1/4" FNPT, 1/2" FNPT
Process Temperature¹	-49°F to 750°F (-45°C to 399°C)



AVAILABLE OPTIONS*

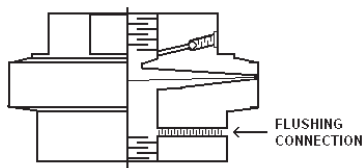
- Flushing (1/4") connection available on lower housing
- Male threaded process connection
- Oxygen cleaned
- Material analysis certificate
- Custom upper/lower/diaphragm materials



Diaphragm Seal	Unit	A	B1	B2	C	D	E	F	G
Standard	In.	1.51"	1.87"	1.74"	1.77"	0.50"	0.53"	0.48"	2.48"
	mm	38	47	44	45	13	13	12	63
With Flushing Connection	In.	1.84"	1.86"	1.70"	2.01"	0.50"	0.50"	0.82"	2.48
	mm	47	47	43	51	13	13	21	63

*Lead times/minimums may apply

8



With 1/4" Flushing Connection

Notes:
1. Process Temperature Rating can vary based on materials of construction, system fill fluid and pressure gauge selection.